

## 揚升桿損壞DIY維修


### Demonstration of exchanging a lift

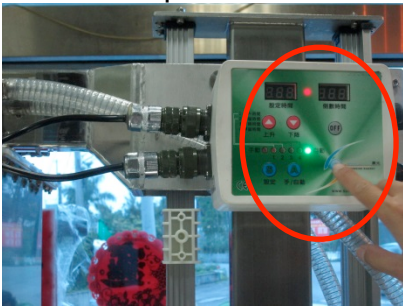



冷卻水套已經上升，但是前側揚升桿滑塊並沒有跟著上升。  
此情形代表前側揚升桿損壞。  
In the event that the slider does not ascend together with the water tank, it is a sign that the lift is broken.

1. 請將揚升桿上升，請操作綠色控制器。  
On the lift control panel:

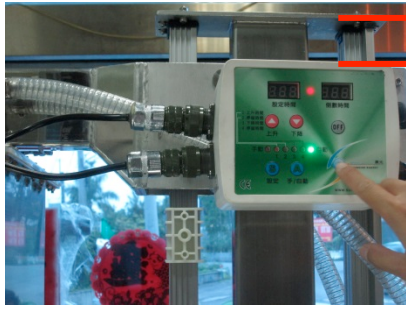


- 在自動模式下 **自動**，按下啟動鍵  上升。(如下圖)  
Press the upwards button within the auto mode.



- 如果操作時，模式在手動模式 **手動**，請先改為自動模式後再按下啟動鍵上升。(如右圖顯示)  
Switch from manual mode to auto mode before pressing the upwards button.
- 上升至距離頂點約5~10公分處，請按OFF鍵  停止。  
Press the off button after the lift has reached a point 5 to 10 centimeter before the top.





5~10公分  
5 to 10 centimeter

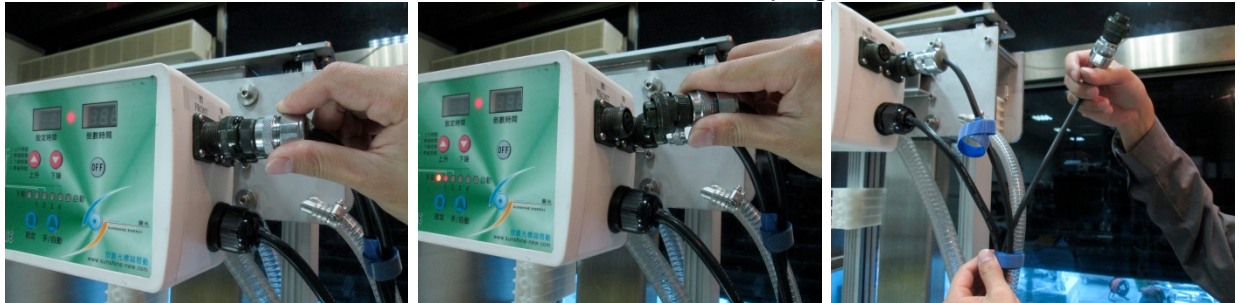
2. 將揚升桿與控制器接頭拔開，如紅色框框處。Disconnect the plug circled in red:



- 接頭上會標示前側或是後側揚升桿接頭。Sockets are labeled with front and back.

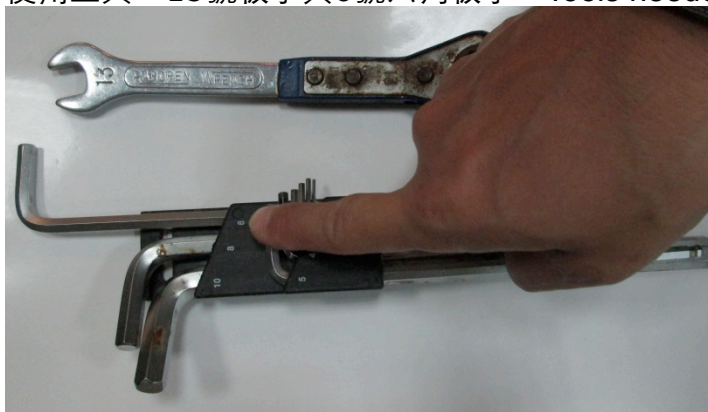


- 請將前側接頭拔除，請旋轉後再拔除。Disconnect the plug indicated as FRONT.

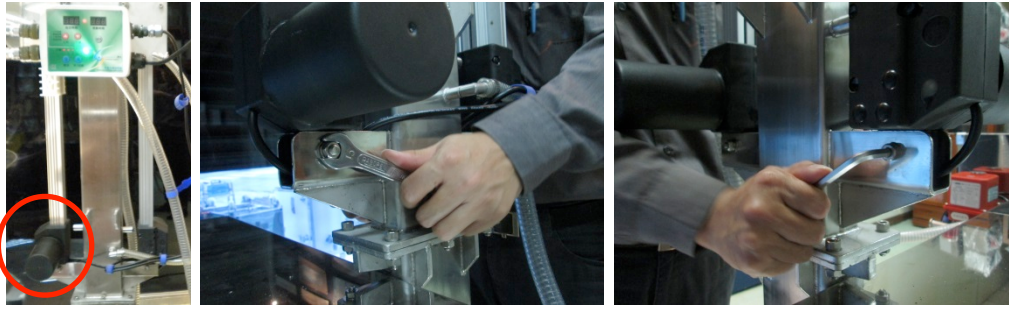


3. 換下損壞的揚升桿。Remove the lift in question:

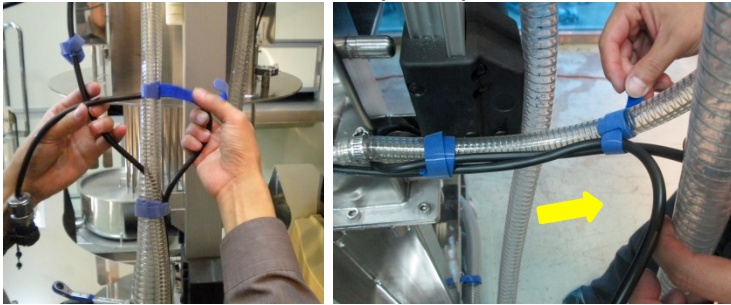
- 使用工具：13號板手與6號六角板手。Tools needed: No.13 and No.6 hex wrenches.



- 鬆開螺絲。Loose the screws with wrenches.



- 將電線固定魔鬼氈鬆開。Open up the blue threads.



- 換下損壞揚升桿，請向外側推出。Push out the lift in question.






4. 換上新的揚升桿。Replace with a new one:

- 請先連接控制器。Plug in the socket.



- 操作綠色控制器並將揚升桿滑塊移動至最靠近黑色馬達處。Place the slider in the position close to the motor.

控制器操作方式：請先按手/自動鍵 **A** 轉換為手動模式 **手動** ，按下啟動後 ，

再按下降鍵  移動。Choose manual mode. Press start and then downwards button.



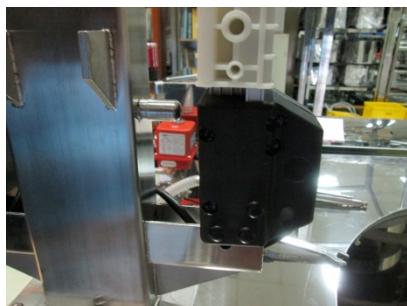
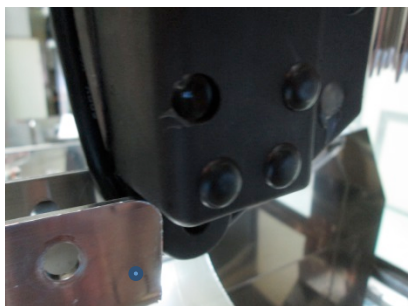
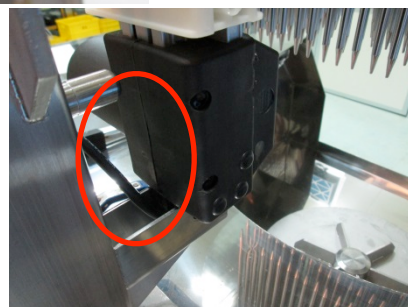
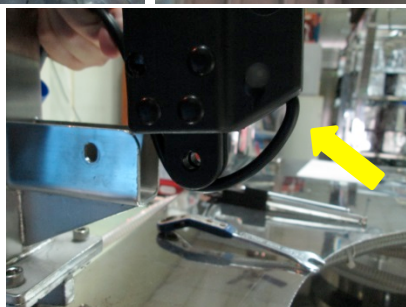
- 換上新揚升桿。Place the new lift.



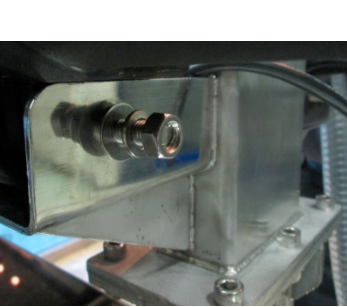
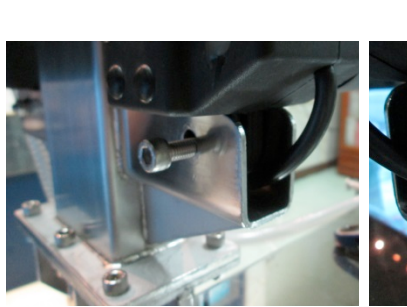
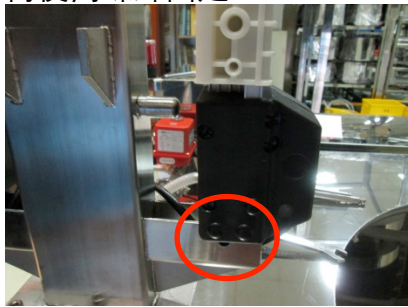
揚升桿上方，請對準此4點之中間  
To place the lift in position, insert the profile into these four screw holes.



請將電線收在內側，如此就可以固定電線。  
Sweeping the wires inwards.






- 再使用螺絲固定。Fasten the lift with screws.



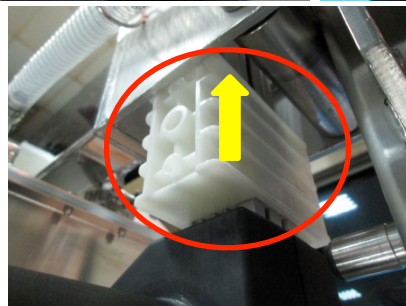
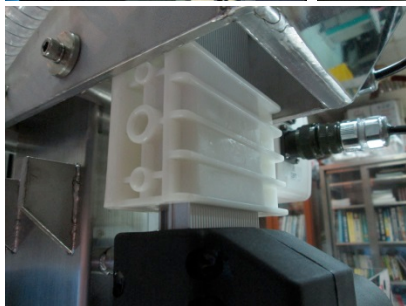
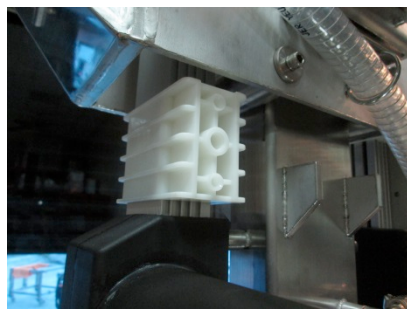
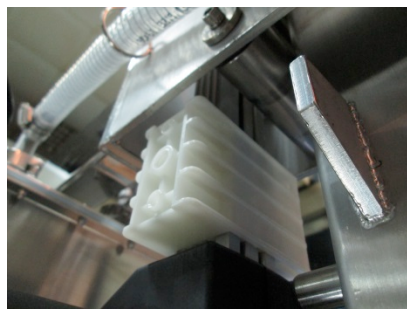
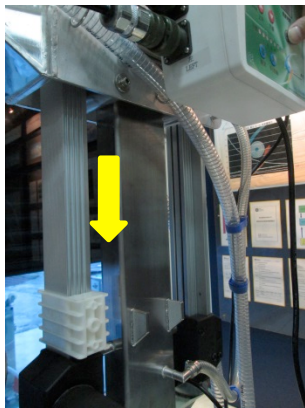
- 使用工具：13號板手與6號六角板手，鎖緊固定後即可。Tools needed: No.13 and No.6 hex wrenches.

## 5. 定位。Initialization:

- 控制器操作：請選擇在**手動模式** 。按下啟動鍵啟動 ，再持續按著下降鍵 ，下降至白色滑塊完全定位置揚升桿橫桿中。Choose manual mode. Press start and then downwards button until the slider glides into the metal bar.



- 定位：Initialization



必須下降至此白色滑塊完全進入不鏽鋼橫桿中即可。  
The slider must fully sit in metal bar.

6. 此時可以使用自動升降模式測試揚升桿是否運作正常。Test the functionality by choosing auto mode.
7. 整線：請將揚升桿線使用魔鬼氈固定即完成快拆DIY維修更換。One may sweep cables together with water pipes by using the provided blue threads.

