



NE-51

高溫急速冷卻機

High Temperature Speedy Cooling Machine

User's Manual

冷卻流程操作說明 Cooling Procedure

辰光能源科技有限公司

SUNSHINE ENERGY TECHNOLOGY CO., LTD.

TEL: 886-49-2200283

FAX: 886-49-2247383

WEBSITE: <http://www.sunshine-new.com/us.aspx>

EMAIL: msch6688@gmail.com

SKYPE: msch6688

ADDRESS: NO. 72-1, DAJUANG RD., NANTOU CITY 54060, TAIWAN

NE-51 使用操作步驟 NE-51 Cooling Procedure

100 度冷卻至常溫操作步驟 100 degree Celsius to room temperature

1. 料槽以油壓板車撐起升高，用腳上下踩油壓缸踏板即可升起料槽
Use forklift to lift up the food trough.



2. 將料槽送入機組中心，讓料槽定位置中。
Put the food trough into the center of the machine.



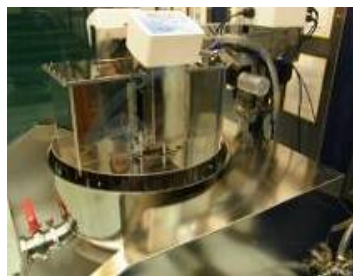
3. 旋轉釋壓閥讓壓力缸釋放壓力，升降牙叉將慢慢降下，料槽就自動定位
Turn the bar like the picture below, the food trough will drop and it will be set in the center by its self.



4. 當牙叉低於料槽高度時，油壓板車即可退出，離開機組。
And then the forklift can move out the machine.



5. 料槽定位後，按住遙控器水套即緩緩下降(安全式設計，放開按鈕時升降即時停止)
When the food trough is set, use the remote control to lower the water tank. (This remote control is safety designed; it will stop moving when you release the button.)



6. 請將電動三通閥切換至自來水冷卻模式(A 模式)
Please select tap water chilling mode (A mode) of the auto three-way valve.



7. 溫度到達後即可取出料槽送至充填區包裝(記得要關閉水源開關與電源開關)
When the temperature reaches, please take out the food trough to the filling area. (Please remember to turn off the water and power)



啓動溫度面板控制開始冷卻

Illustration of stirrer speed and temperature control box

8. 按晨光標誌 = 啓動馬達冷卻
Sunshine Energy button=Begin to chill



綠色溫度燈 = 客戶想要到達溫度
Green light temperature
=the temperature you want to chill

按 off 鍵 = 結束或停止
Off button=Stop



紅色溫度燈 = 料槽內食品現在溫度
Red light temperature (food temperature)



紅色向上鍵 = 設定溫度向上調整
Red up and down buttons: temperature adjust, higher and lower



紅色向下鍵 = 設定溫度向下調整



綠色向上鍵 = 設定馬達轉速變快調整
Green up and down buttons: stirrer speed adjust, faster and slower



綠色向下鍵 = 設定馬達轉速變慢調整



開啓關閉電源(電控盒背面防水設計)

Main power button (this button is designed for anti-water)



啓動時間旋轉面板控制

Illustration of time and turn speed control box

9. 按晨光標誌 = 啓動旋轉馬達
Sunshine Energy button=Begin to turn

按 off 鍵 = 結束或停止
Off button=Stop



綠色時間燈 = 客戶設定冷卻時間
Green light time
=the time you want to chill

紅色時間燈 = 料槽冷卻剩餘時間
Red light temperature (food temperature)



紅色向上鍵 = 設定時間向上調整
Red up and down buttons: time adjust, longer or shorter

紅色向下鍵 = 設定時間向下調整



綠色向上鍵 = 設定馬達轉速變快調整
Green up and down buttons: turn speed adjust, faster and slower

綠色向下鍵 = 設定馬達轉速變慢調整



開啓關閉電源(電控盒背面防水設計)在門後，請打開
Main power button (this button is designed for anti-water)



兩段式循環降溫 Two Step Chilling Procedure

100 降至 38 度降溫與上述步驟相同 100°C to 38°C are the same steps like the page 1 to 3.
38 度降至 18 度以下的切換步驟說明 38°C to 18°C are the process below.

1. 確認設定溫度是否為 18 度以下(請一開始即設定此溫度)

Please confirm the **target temp** is under 18°C. Adjust to 18°C at beginning.



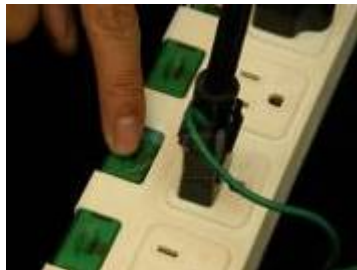
請將全自動三通閥控制器設定在 B 模式。

Please select the B chilling mode.



2. 開啓沉水馬達電源(注意，開啓沉水馬達之前，記得倒入 1/4 的水，這樣沉水馬達才抽的到冰水) 建議客戶採遠端加壓機設計，此電源開啓步驟就不需要

Please turn on the pump (Before turn on the pump, please remember to put a quarter high of water in the water trough)



3. 降溫完成之步驟：溫度到達後即可取出料槽送至充填區包裝(記得要關閉水源開關與電源開關)

When the food temperature reaches target temp., please take out the food trough to the filling area. (Please remember to turn off the water and power)





全程冰水循環降溫 Ice Water Chilling in Whole Cooling Procedure

100 度降至 18 度以下的切換步驟說明
100°C to 18°C Cooling Procedure

1. 確認設定溫度是否為 18 度以下

Please confirm the **target temp** is under 18°C. Adjust to 18°C at beginning



請將全自動三通閥控制器設定在 B 模式。

Please select the B chilling mode.



2. 開啓沉水馬達電源(注意，開啓沉水馬達之前，記得倒入 1/4 的水，這樣沉水馬達才抽的到冰水) 建議客戶採遠端加壓機設計，此電源開啓步驟就不需要

Please turn on the pump (Before turn on the pump, please remember to put a quarter high of water in the water trough)



3. 降溫完成之步驟：溫度到達後即可取出料槽送至充填區包裝(記得要關閉水源開關與電源開關)

When the food temperature reaches target temp., please take out the food trough to the filling area. (Please remember to turn off the water and power)



清洗事項 Clean

魚骨頭排列方式(手皆可伸入導能管內部清洗)

The arrangement of energy conduction tube is like fish bone. (It's easy to clean.)



更換碳刷 Brusher change



《組裝反向操作即可 Reverse the operation process as above when assembling.》

Customer Service Line (oversea) : 886-49-2200283

客服專線(台灣 Taiwan) : 0800-277888